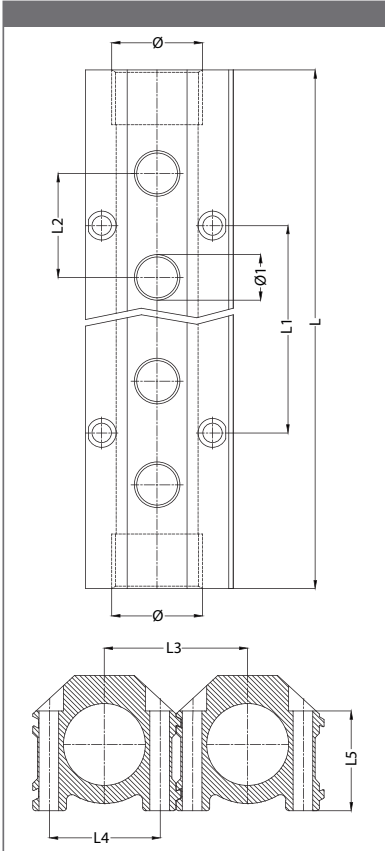
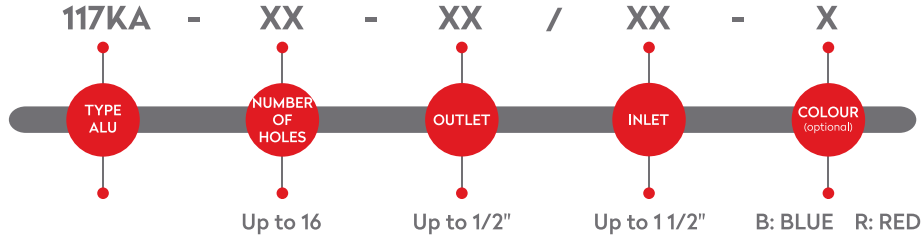
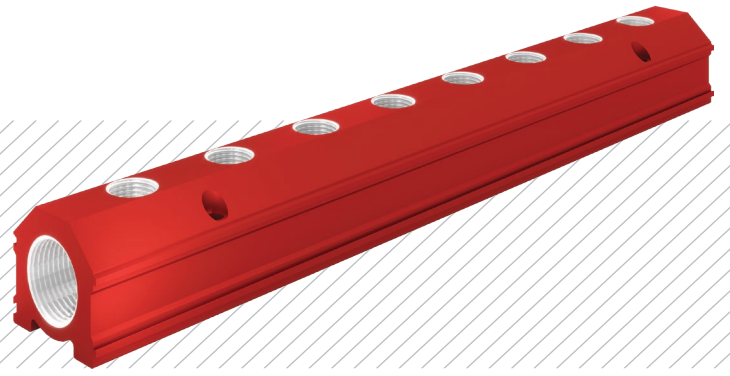


SERIE 117KA



		Ø1 = OUTLET = 1/4"			Ø = INLET = 3/4"		
Number of Holes	Part No.	L	L1	L2	L3	L4	L5
4	117KA-04-13/26	190	76	38	45	31	30
6	117KA-06-13/26	266	152	38	45	31	30
8	117KA-08-13/26	342	228	38	45	31	30
10	117KA-10-13/26	418	304	38	45	31	30

		Ø1 = OUTLET = 3/8"			Ø = INLET = 3/4"		
Number of Holes	Part No.	L	L1	L2	L3	L4	L5
4	117KA-04-17/26	229	102	51	45	31	30
6	117KA-06-17/26	331	204	51	45	31	30
8	117KA-08-17/26	433	306	51	45	31	30

		Ø1 = OUTLET = 1/4"			Ø = INLET = 1"		
Number of Holes	Part No.	L	L1	L2	L3	L4	L5
4	117KA-04-13/33	190	76	38	53	40.6	36.5
6	117KA-06-13/33	266	152	38	53	40.6	36.5
8	117KA-08-13/33	342	228	38	53	40.6	36.5
10	117KA-10-13/33	418	304	38	53	40.6	36.5
12	117KA-12-13/33	494	380	38	53	40.6	36.5
16	117KA-16-13/33	646	532	38	53	40.6	36.5

		Ø1 = OUTLET = 3/8"			Ø = INLET = 1"		
Number of Holes	Part No.	L	L1	L2	L3	L4	L5
4	117K-04-17/33	229	102	51	53	40.6	36.5
6	117K-06-17/33	331	204	51	53	40.6	36.5
8	117K-08-17/33	433	306	51	53	40.6	36.5
10	117K-10-17/33	535	408	51	53	40.6	36.5
12	117K-12-17/33	637	510	51	53	40.6	36.5
16	117K-16-17/33	841	714	51	53	40.6	36.5

		Ø1 = OUTLET = 1/2"			Ø = INLET = 1"		
Number of Holes	Part No.	L	L1	L2	L3	L4	L5
4	117KA-04-21/33	229	102	51	53	40.6	36.5
6	117KA-06-21/33	331	204	51	53	40.6	36.5
8	117KA-08-21/33	433	306	51	53	40.6	36.5
10	117KA-10-21/33	535	408	51	53	40.6	36.5
12	117KA-12-21/33	637	510	51	53	40.6	36.5